

BELLA TERRA P.U.D. PLAT NO. 4 REPLAT

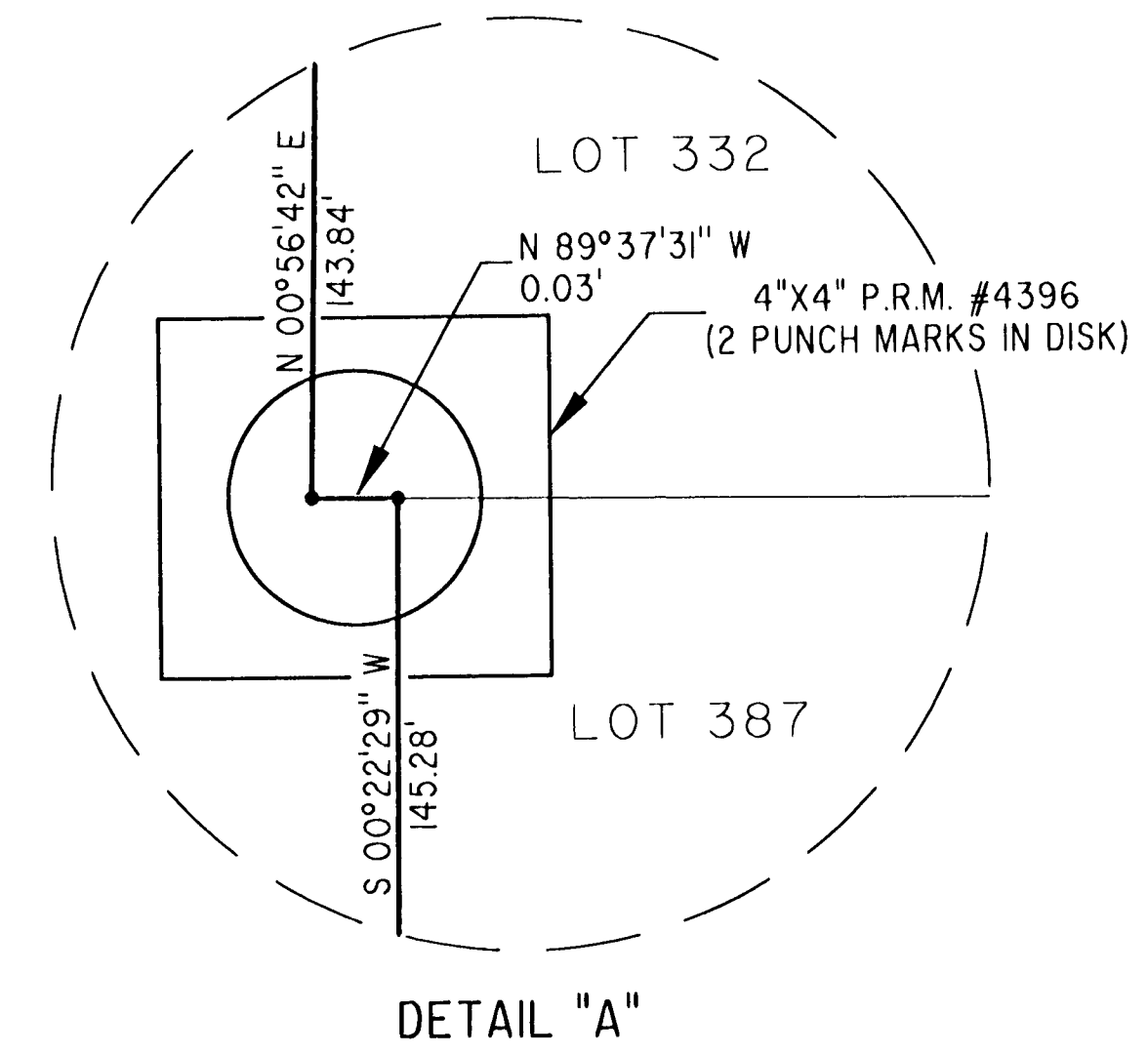
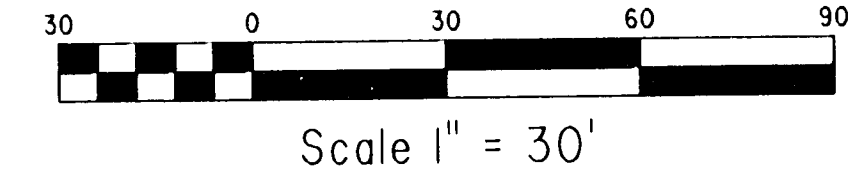
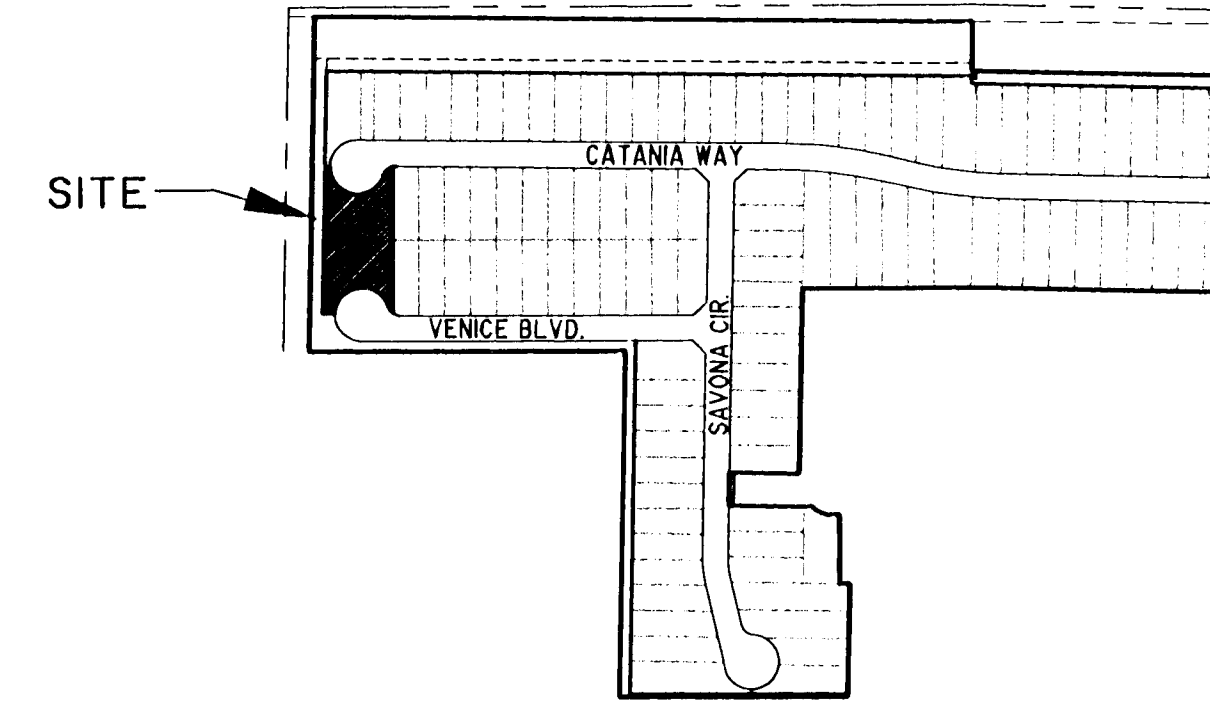
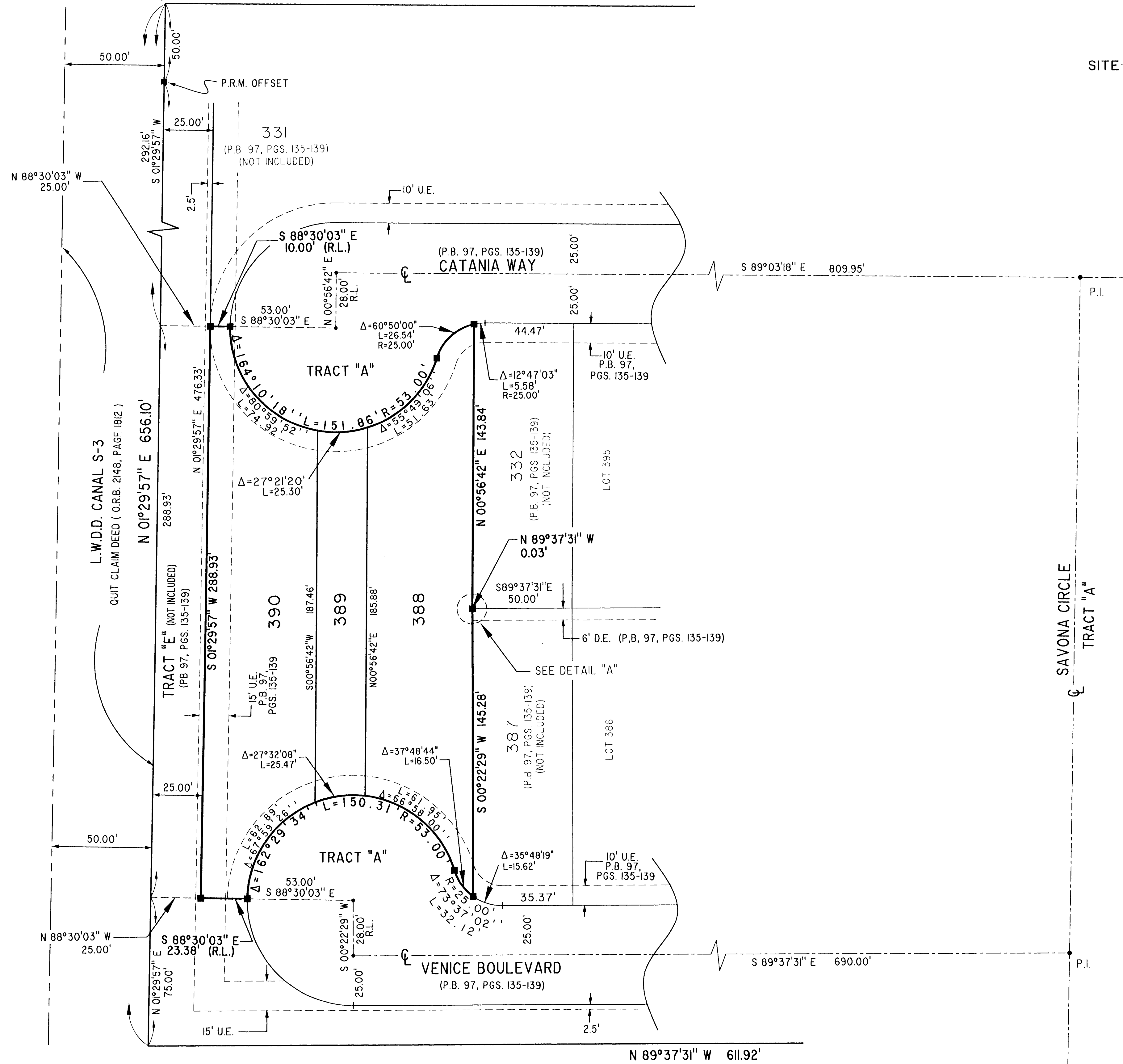
BEING A REPLAT OF OF ALL OF LOTS 388 THRU 393
 BELLA TERRA P.U.D. PLAT NO. 4, AS RECORDED IN PLAT BOOK 97, PAGES 135 THROUGH 139,
 PUBLIC RECORDS OF PALM BEACH COUNTY, FLORIDA AND LYING IN SECTION 36, TOWNSHIP 43 SOUTH
 RANGE 41 EAST, VILLAGE OF ROYAL PALM BEACH, PALM BEACH COUNTY, FLORIDA.
 FEBRUARY, 2004 SHEET 2 OF 2

109

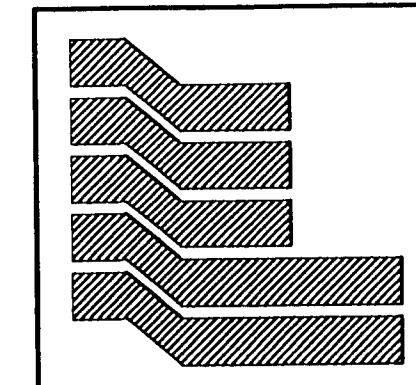
NORTHWEST CORNER OF
 BELLA TERRA P.U.D. PLAT NO. 1
 (P. B. 94, PGS. 13 - 28)

STATE OF FLORIDA SS
 COUNTY OF PALM BEACH
 THIS PLAT WAS FILED FOR RECORD AT _____
 M. THIS _____ DAY OF _____ 2004
 AND DULY RECORDED IN PLAT BOOK NO. _____
 ON PAGE _____
 DOROTHY H. WILKEN, CLERK OF THE CIRCUIT COURT
 BY _____ D.C.

NOT PLATTED



NOT PLATTED



Landmark Surveying & Mapping Inc.
 1850 Forest Hill Boulevard
 Ph. (561) 433-5405 Suite 100 W.P.B. Florida
 LB # 4396

BELLA TERRA P.U.D. PLAT NO. 4
 REPLAT